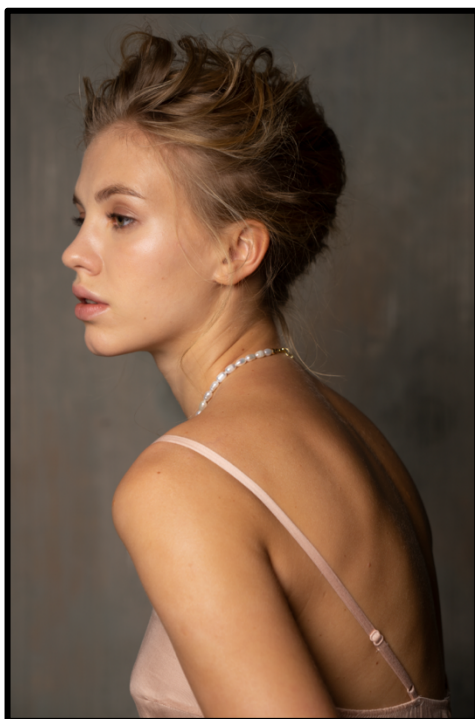


Creating High Contrast Black & White Photos

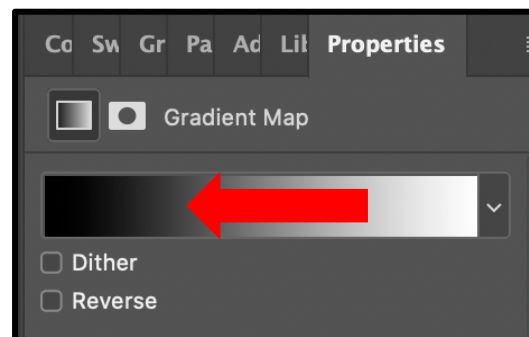
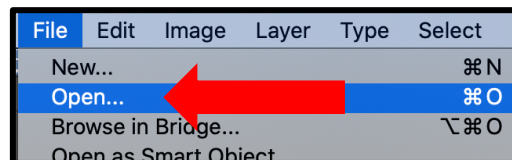
Program Requirements: Photoshop CC

Instructor: Ms. Yurkovich Course: Photography

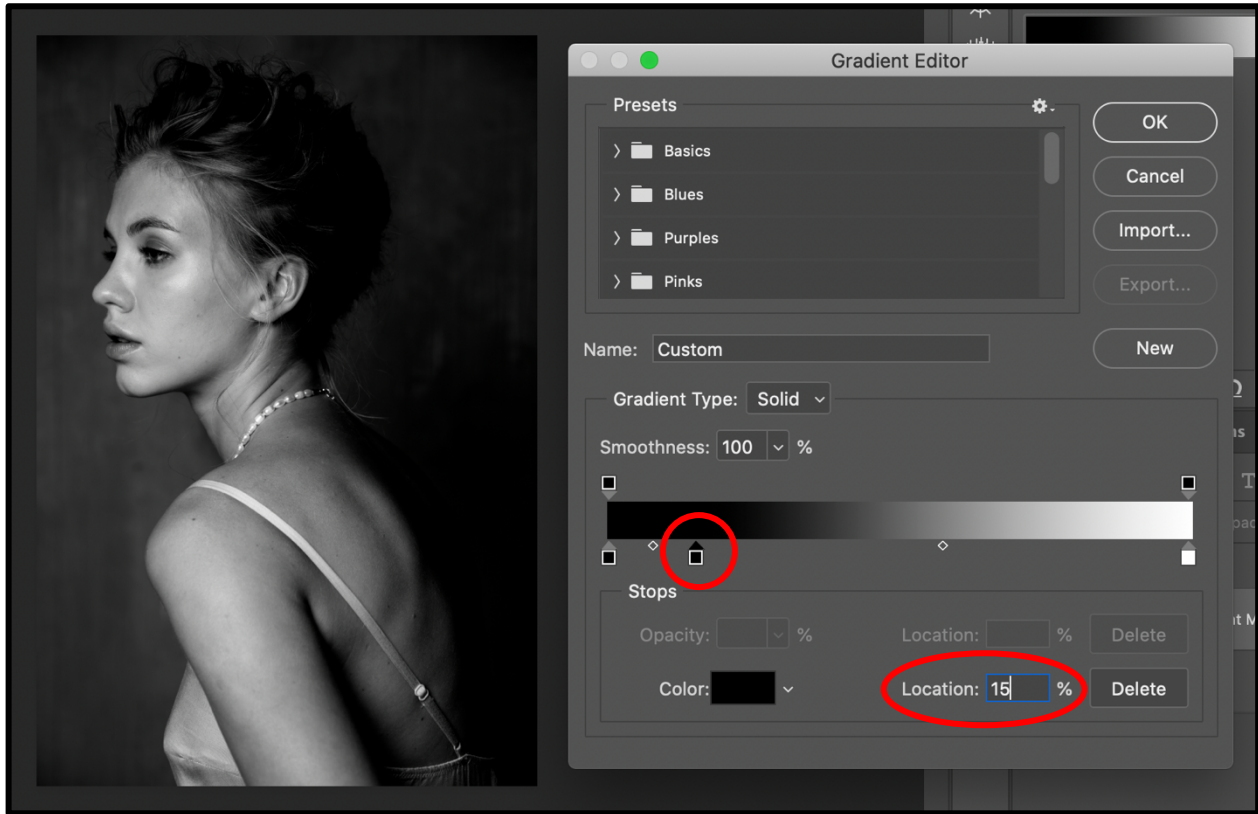
This tutorial will show you how to create high contrast black and white photos using Photoshop's Gradient Mapping.



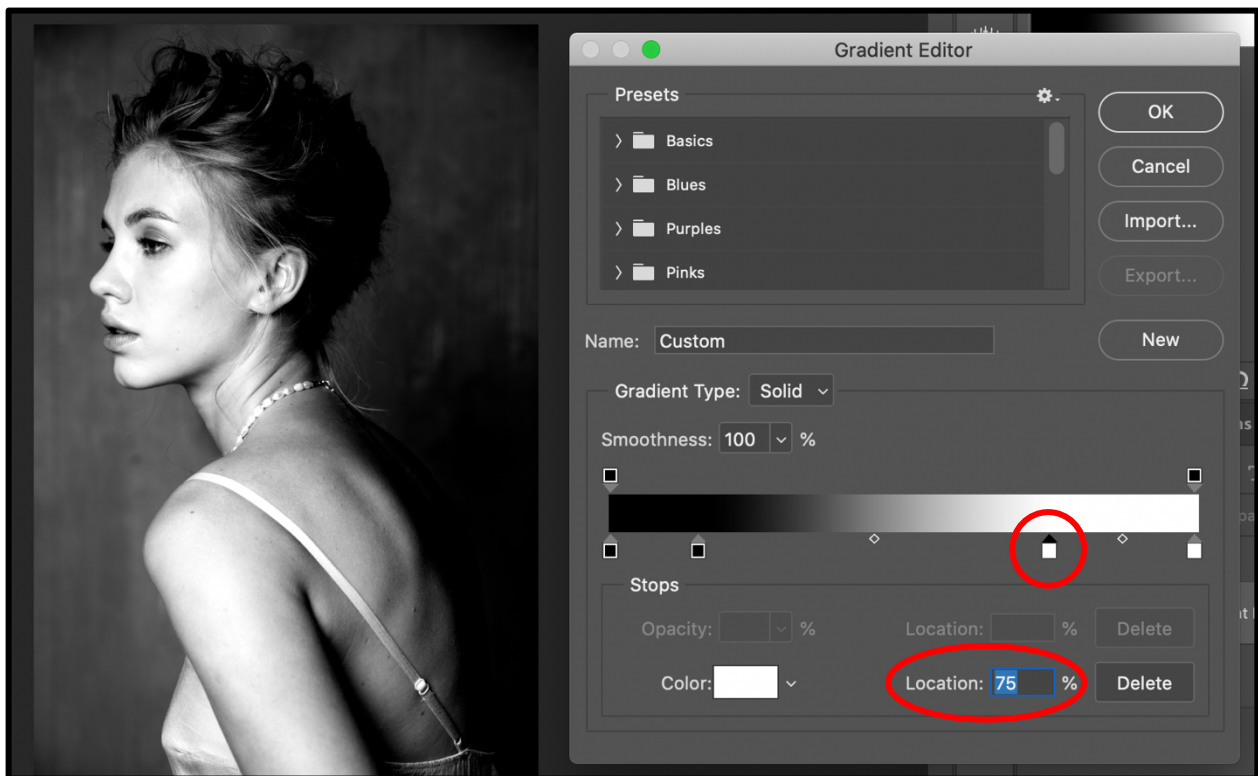
1. Open Photoshop by double clicking on the Photoshop icon. Open the file by going to *File > Open* and navigating to your photo, *Gradient Mapping 1.jpg* . Click *Open* and your file will appear in Photoshop.
2. In the bottom right hand corner of the *Layers Palette* click on the *Adjustment Layers Icon* (the circle that is half white and half grey). When the *Adjustment Layers Menu* pops up choose *Gradient Map* near the bottom of the list.
3. Click on the gradient part that pops up in the *Properties* window.



4. When the *Gradient Editor* pops up click on the black slider then click on the empty space to the right of it and another black slider will pop up. Slide the slider to the 15% mark.



5. Now click on the white slider then click on the empty space to the left of it and another white slider will pop up. Slide the slider to the 75% mark



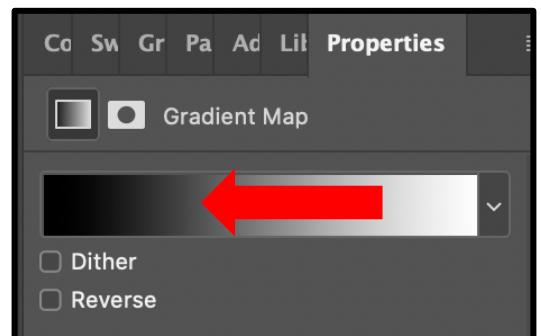
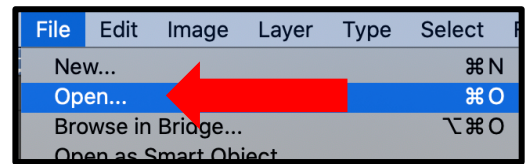
6. Time to save it and turn it in! Go to *File > Save As*. When the window pops up asking you where you want to save your file click on *Save on Computer*. Rename your file, so you can easily find it later

and make sure you take note of the location you are saving it on. Change the *Format* to *JPG* and then click *Save*. A new window will pop up asking you about what kind of JPG file you want. Don't change anything, just click *Okay*.

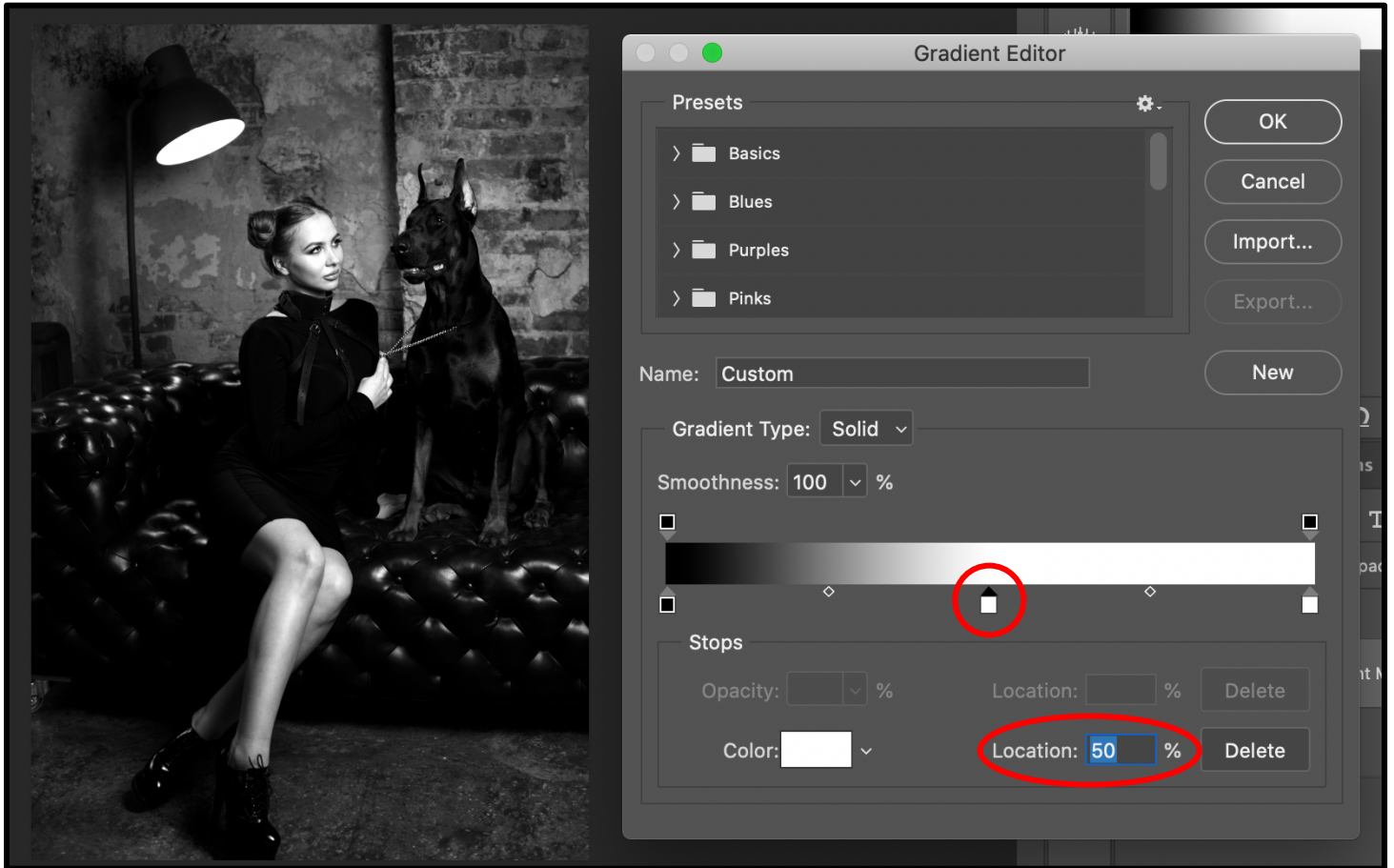
7. Now turn in your file on *Canvas*!



1. Open Photoshop by double clicking on the Photoshop icon. Open the file by going to *File > Open* and navigating to your photo, *Gradient Mapping 1.jpg*. Click *Open* and your file will appear in Photoshop.
2. In the bottom right hand corner of the *Layers Palette* click on the *Adjustment Layers Icon* (the circle that is half white and half grey). When the *Adjustment Layers Menu* pops up choose *Gradient Map* near the bottom of the list.
3. Click on the gradient part that pops up in the *Properties* window.



- When the *Gradient Editor* pops up click on the white slider then click on the empty space to the left of it and another white slider will pop up. Slide the slider to the 15% mark.



- Time to save it and turn it in! Go to *File > Save As*. When the window pops up asking you where you want to save your file click on *Save on Computer*. Rename your file, so you can easily find it later and make sure you take note of the location you are saving it on. Change the *Format* to *TIFF* and then click *Save*. A new window will pop up asking you about what kind of layers and options you want. Don't change anything, just click *Okay*.
- Now turn in your file on *the Server*!