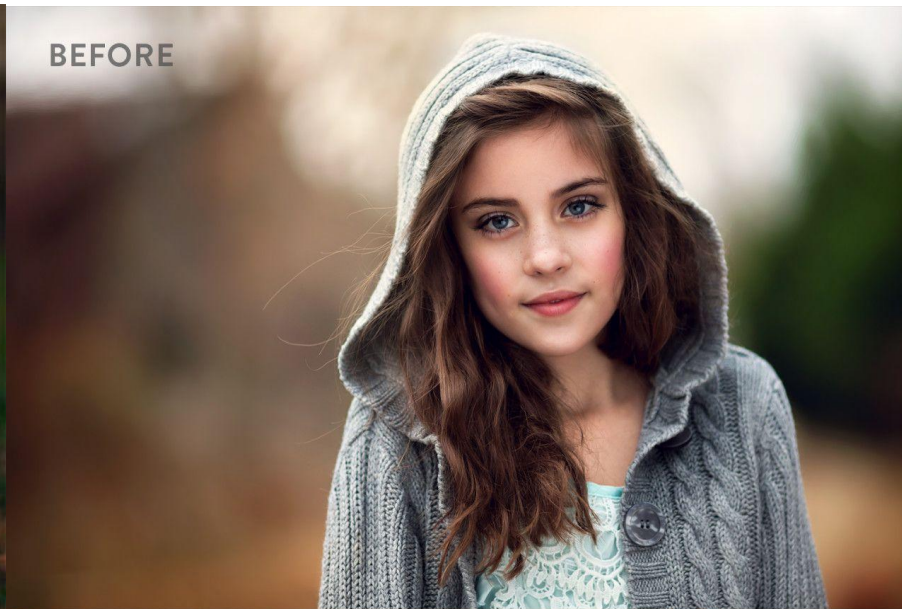


Welcome
to The World of
Overlays!!!

Photoshop Project #8



Overlays are high resolution images that can be laid over a photograph to add an additional element to that photo. That element can be anything from a border, a rainbow, a tornado, a lighting effect, to bubbles, hearts, and more!



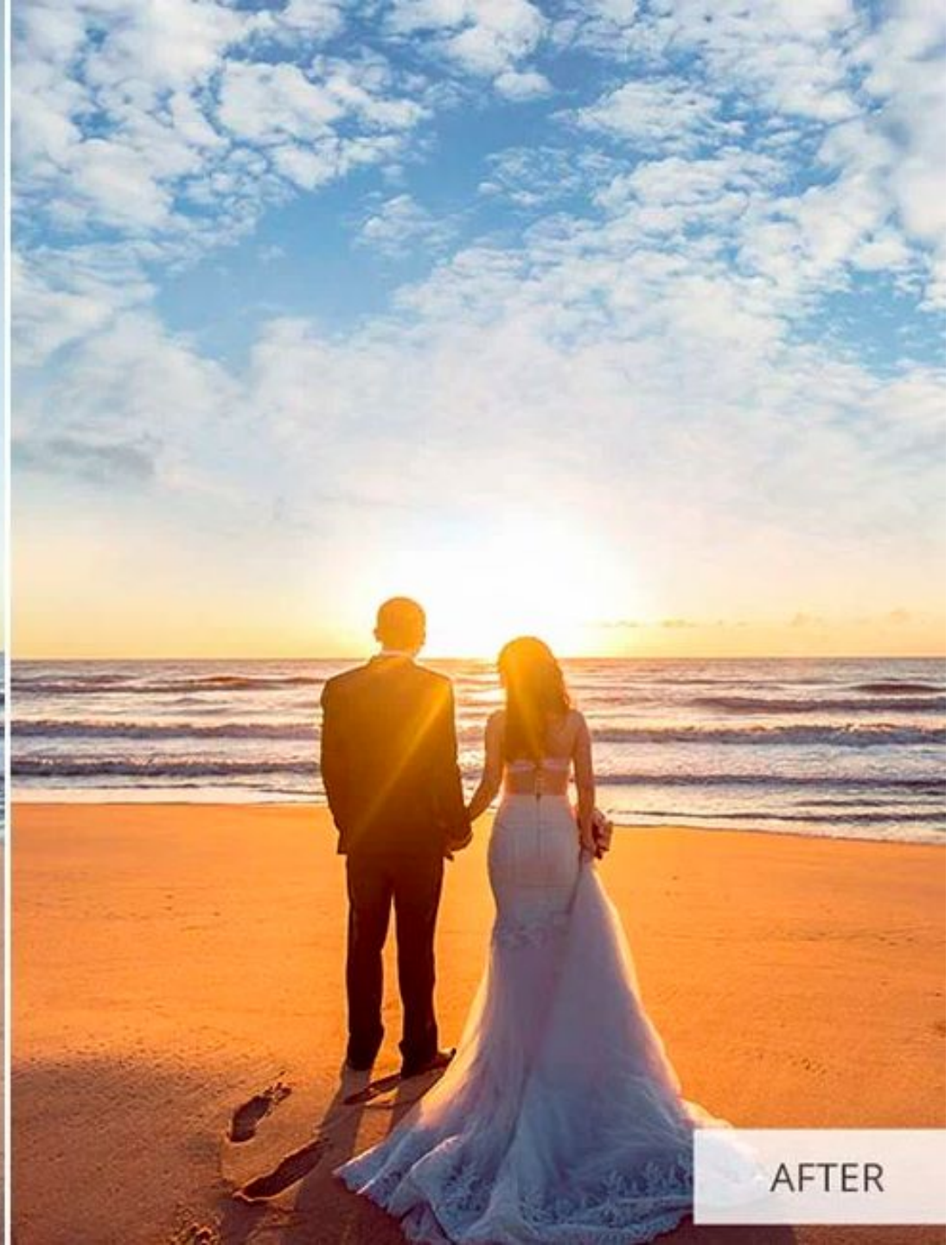
BEFORE



AFTER



BEFORE



AFTER







BEFORE



AFTER



BEFORE



AFTER

THE BEST

Overlays!



Before



After



Before



After



After









LAURA
my 40th birthday

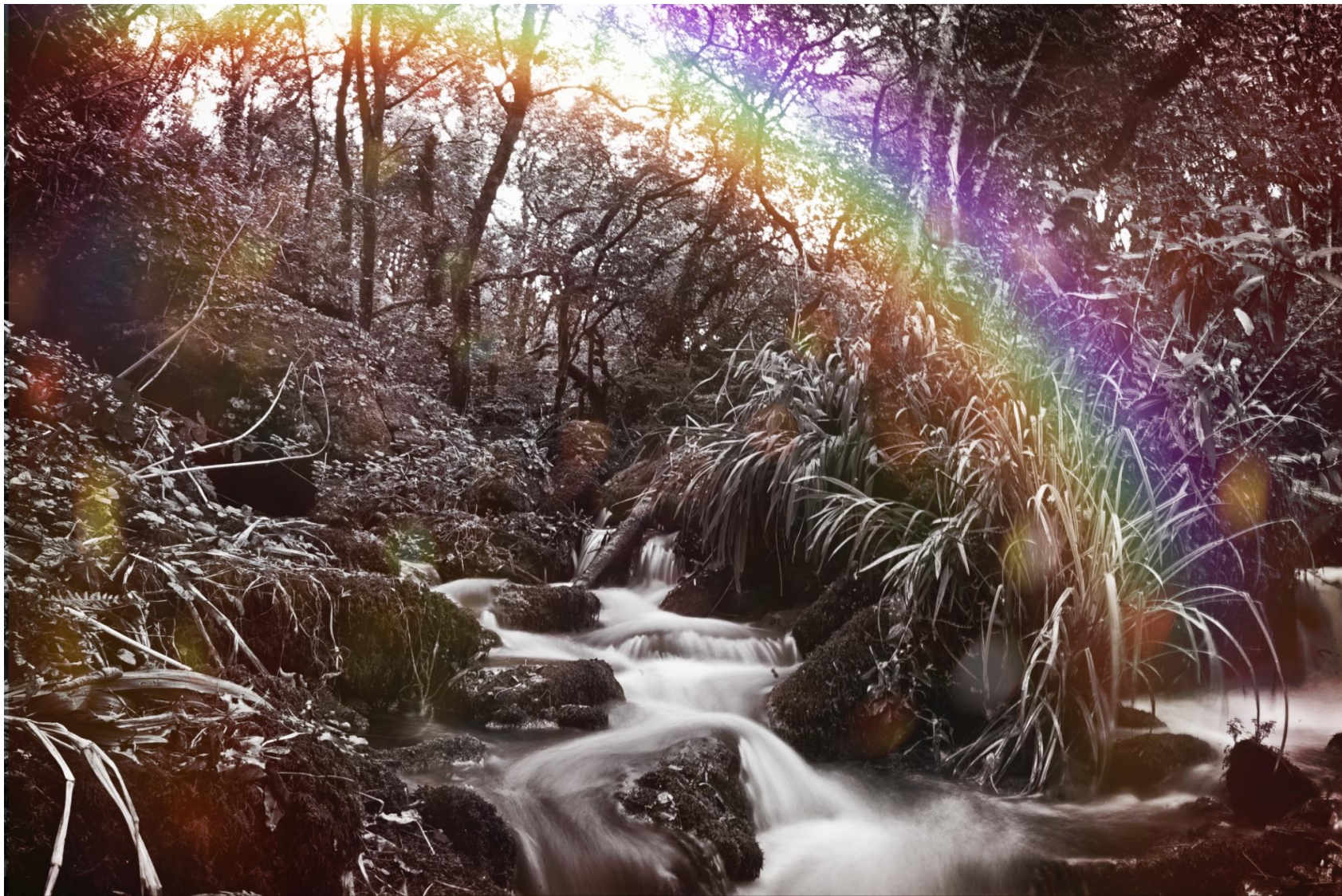
I AM funny smart beautiful sarcastic	I LOVE MY DOGS: SPENCER AND FIZZIE BEAR WINE Family & Friends Deep Eddy Grapefruit Vodka TRAVELING THE WORLD The beach travel more often give out more hugs LOVE MORE curative share my babies	I STAND 64 INCHES I WEIGH NOPE FAVORITE MUSIC Chill Masta
FAVORITE SHOWS: FRIENDS Big brother	FAVORITE MOVIES: Better Off Dead	





The background is a dark, almost black, textured surface with a cracked, stone-like appearance. The cracks are irregular and create a complex, organic pattern across the entire frame. The lighting is slightly uneven, with some areas appearing darker than others, giving it a three-dimensional, rugged feel.

Rainbow Overlays



Using the rainbow tutorial you can create images that look just as good as the real thing!

Double Rainbow



before



Edited with "Rainbow 13"
(in Screen Blend Mode at 100% opacity)



www.morganburks.com

What can you add a sense of magic to with a rainbow?



What can you add a sense of magic to with a rainbow?



Check out these student examples!





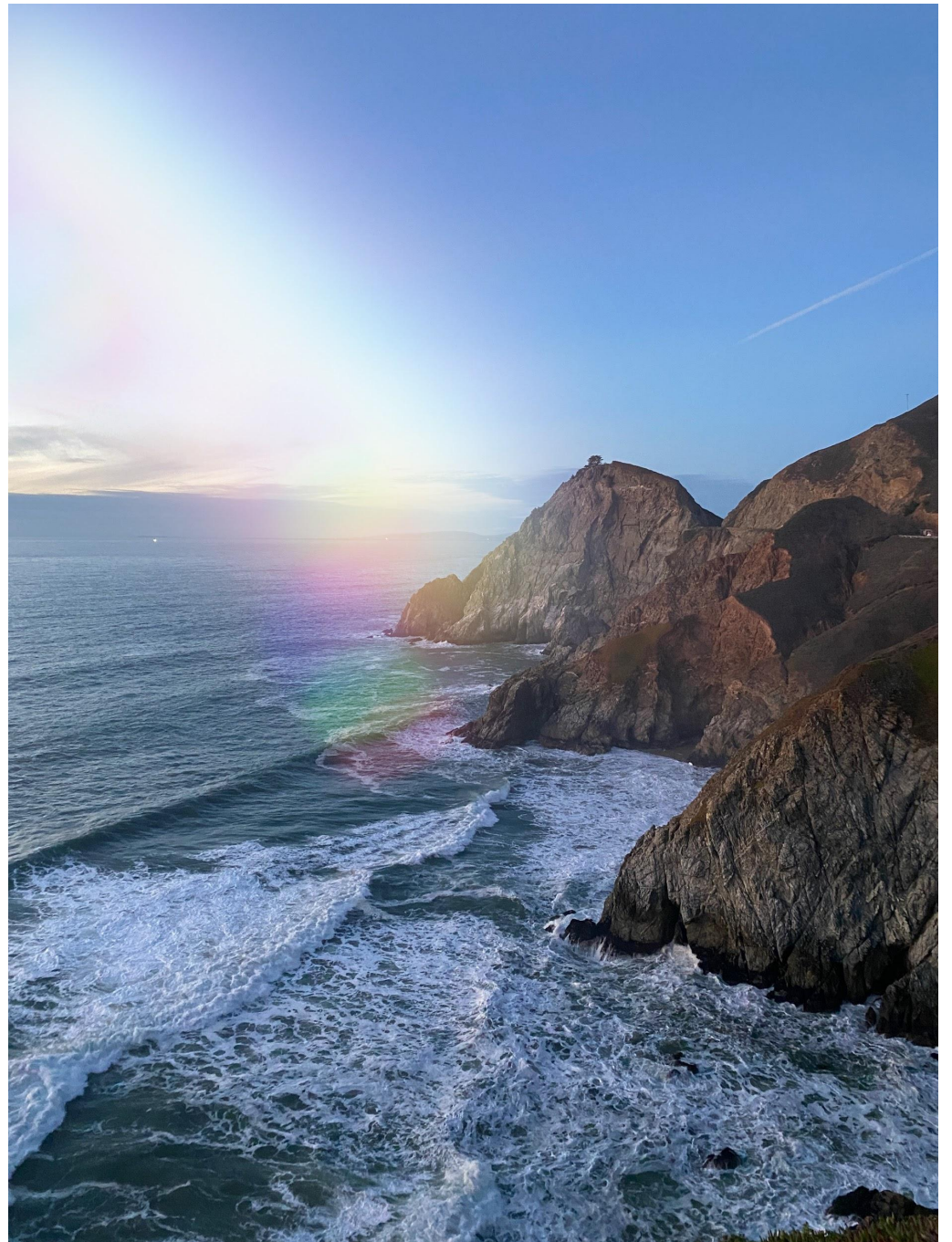


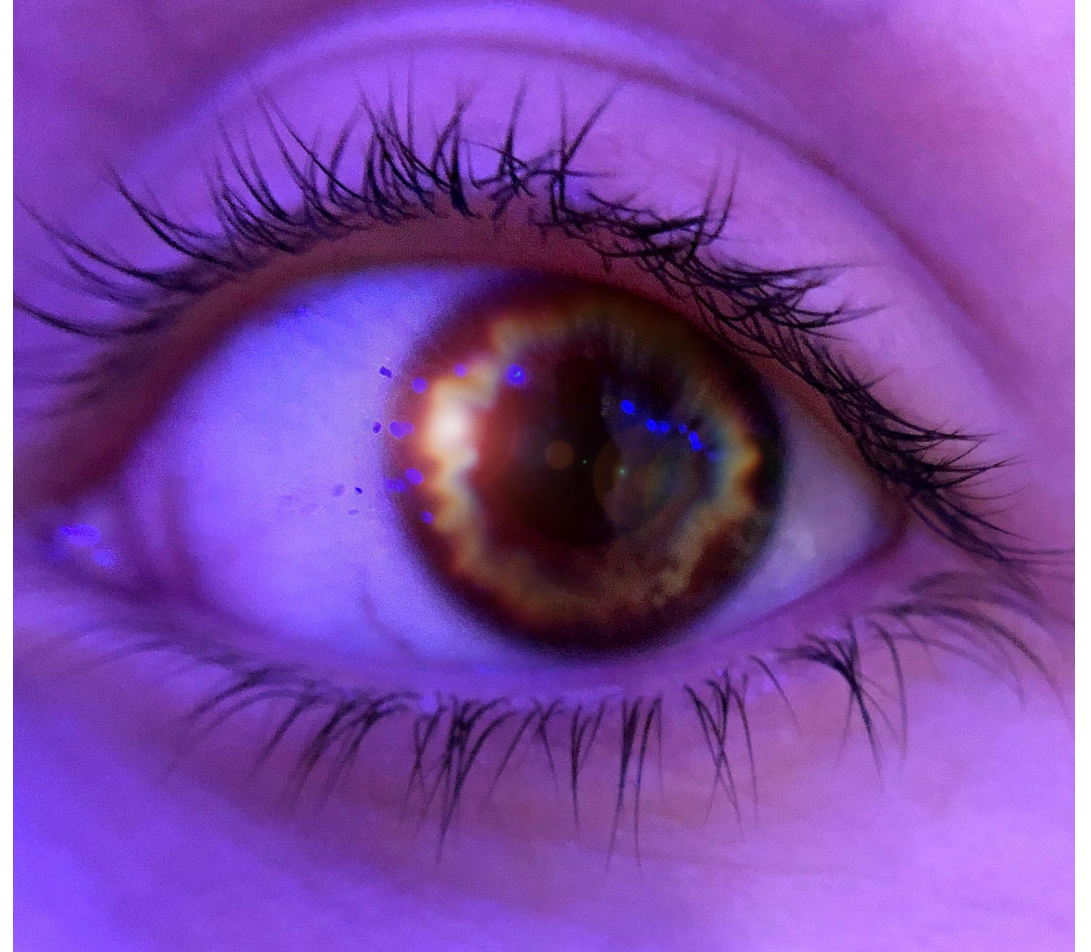




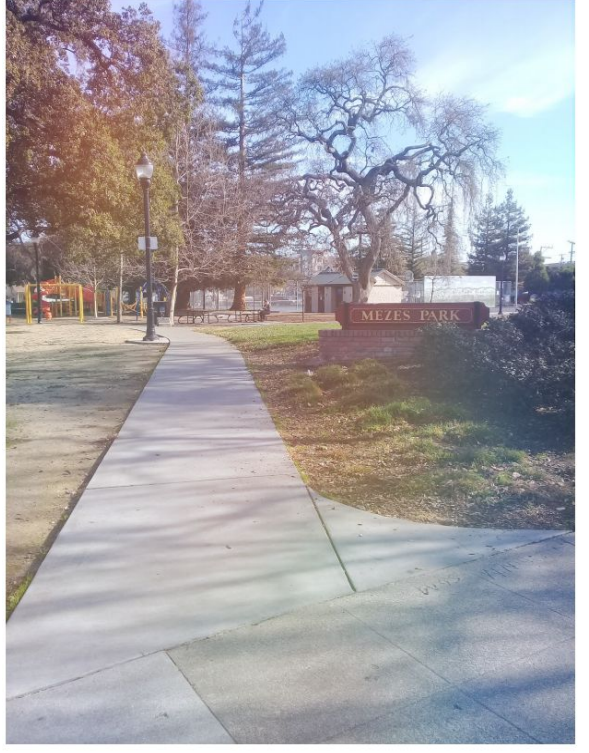
BAZAART®













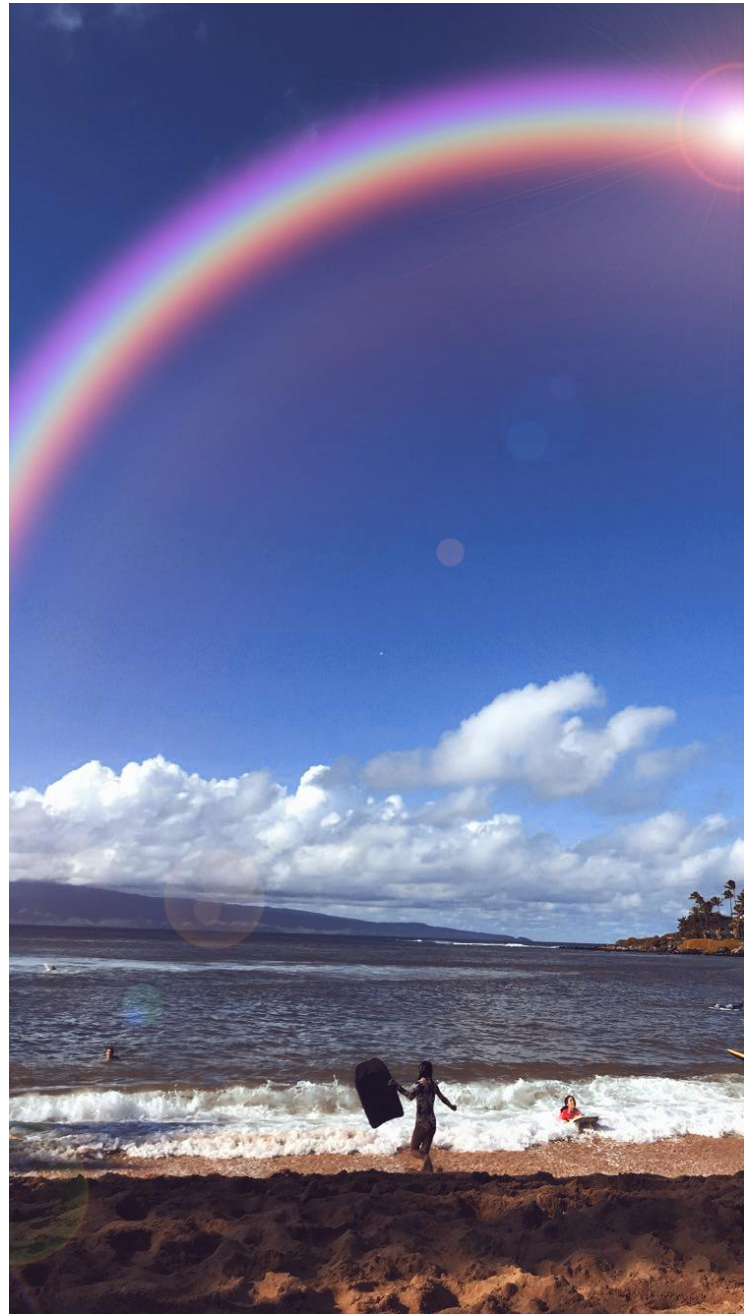












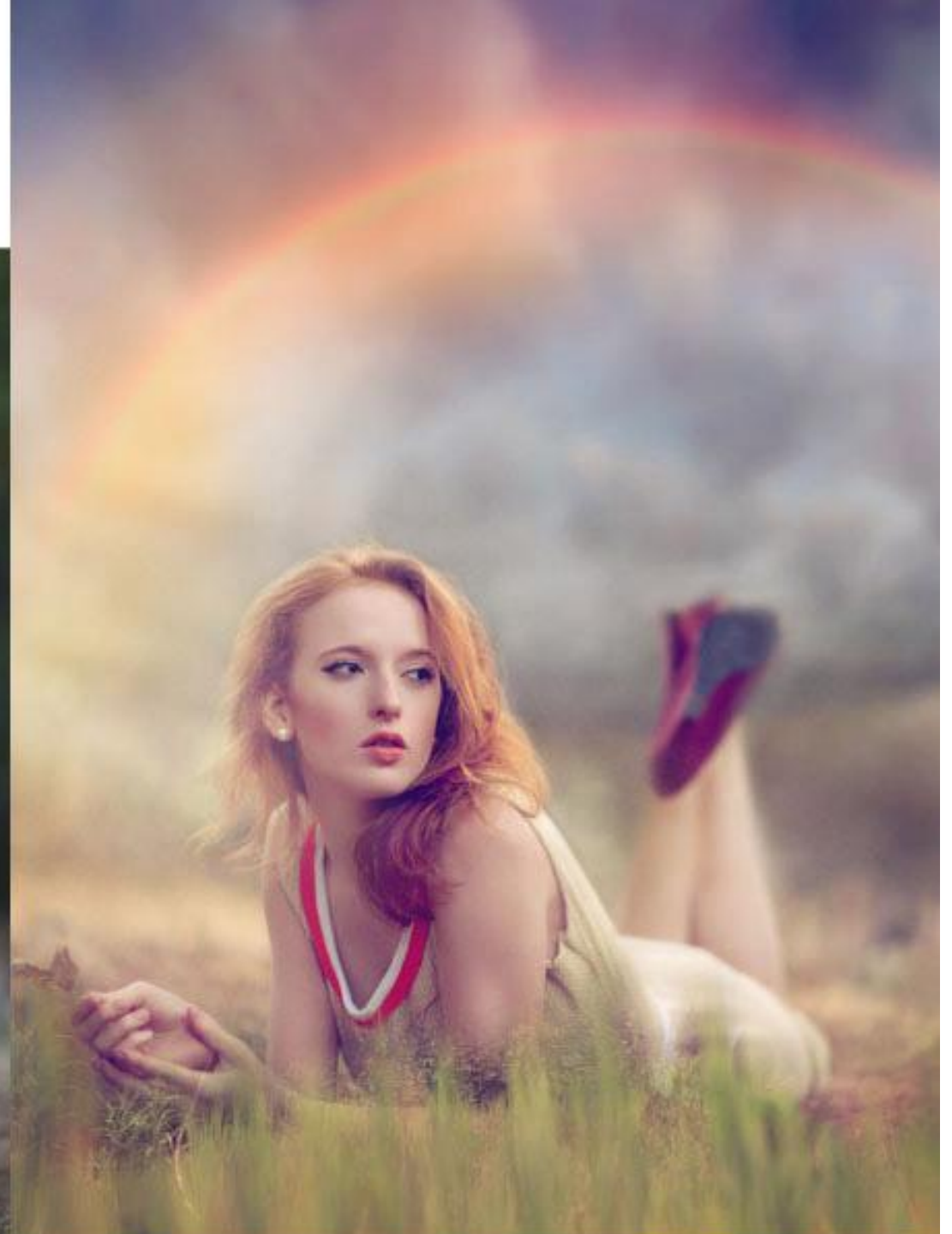




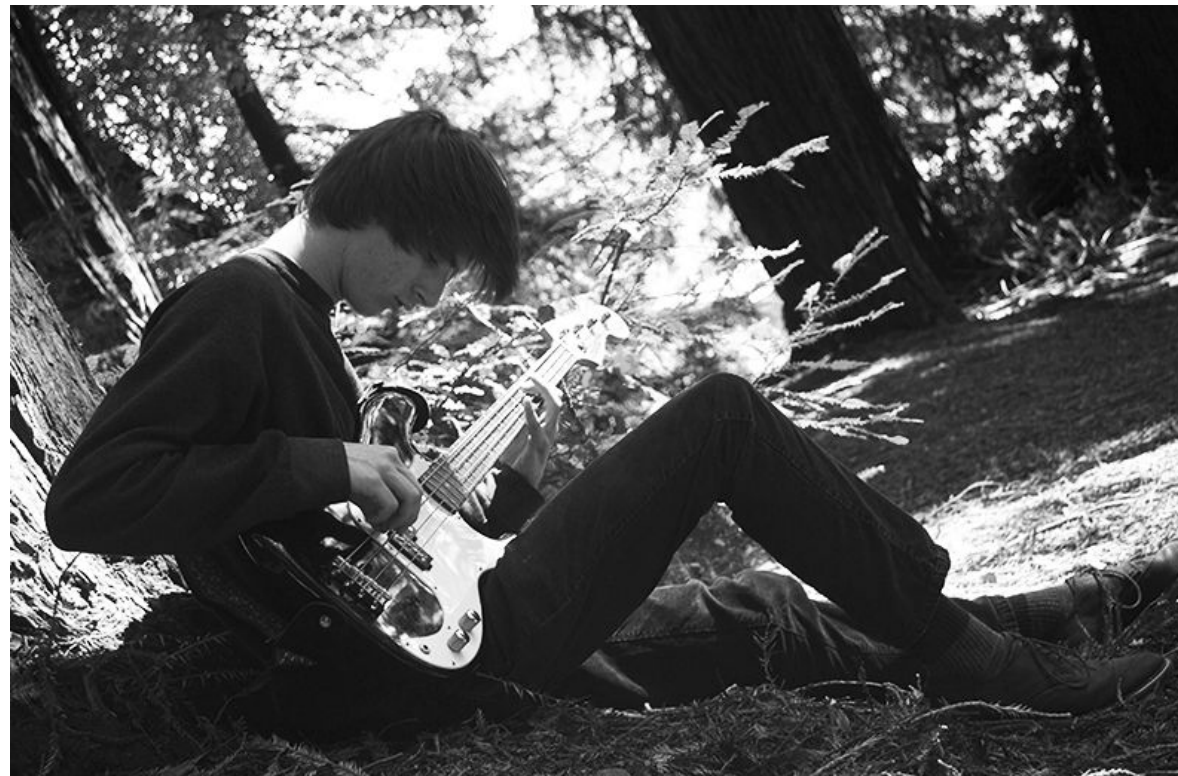




What can you add a sense of magic to with a rainbow?



What can you add a sense of magic to with a rainbow?



Final Expectations for **Rainbow Overlay**

Get One of the Turn In Sheets at the Front & Download to Class Server When You're Done

PROJECT REQUIREMENTS:

- **1 composite rainbow photo** made using the sample photos Forest.png & Rainbow_2.jpg
- **3 composite rainbow photos** made using **YOUR** photos **PLUS** photos from the **Google Drive Folder** shared on www.Darkroom-Daydreams.com
- Do not repeat any of the rainbow files you use!
- 4 final photos submitted on the server

EDITING REQUIREMENTS:

- Cropped to 8x10 or 10x8
- Resolution is 300 DPI
- duplicate background copy
- 3+ adjustment layers
- Saved as a TIFF
- Complete name and assignment title in the file name (for example: **Smith_Jane_Rainbow_1.tif**)