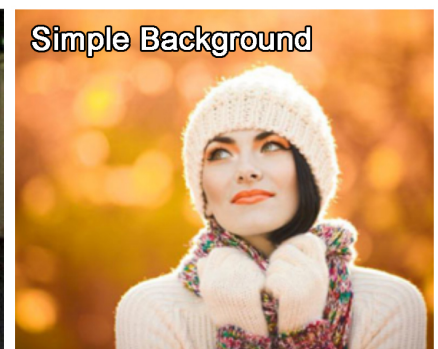
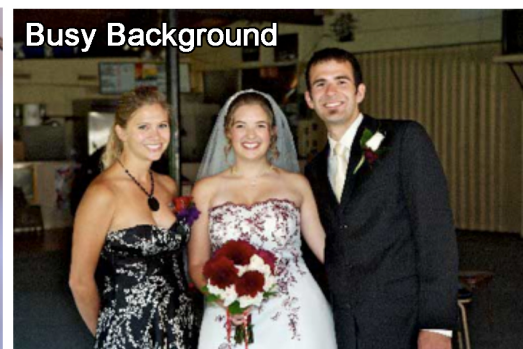
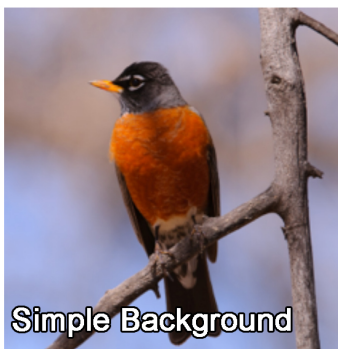


Compositional Guidelines to make your Compositions stronger

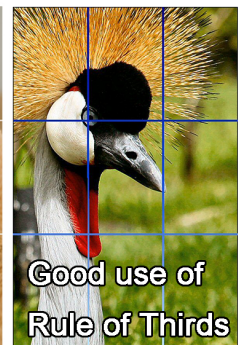
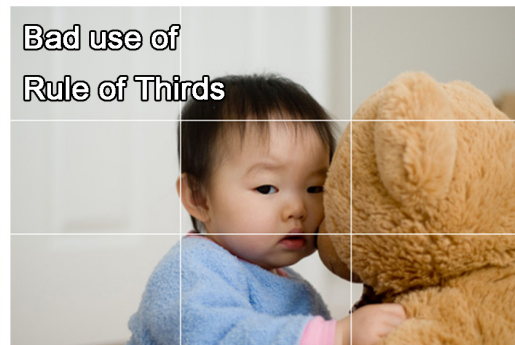
1. No Mergers — When an object in the background merges into the subject & weakens your composition



2. Simple Backgrounds — Busy Backgrounds take away from your subject & weaken your composition



3. Rule of Thirds — The human eye naturally gravitates to intersection points that occur when an image is split into thirds



4. Leading lines or S-Curves — Leading lines or S-Curves strengthen your composition by leading your eye through the photograph

